

223- Series Pressure Protection Valves



GT 223 Series Pressure Protection Valves are designed for convenient, in-tank mounting, with either 3/8" or 1/2" NPT threads. The standard configuration includes dual outlets, with a variety of closing pressures to best match the customer's application.

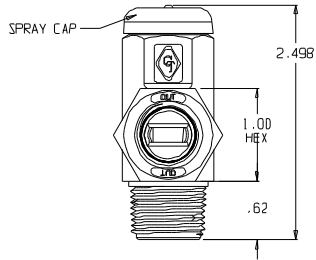
Performance

Function	The Pressure Protection Valve assembly is intended to isolate a portion of a vehicle air system if a leak occurs, so that the integrity of the remaining system is retained. This valve to mount on an air tank. Outlet ports can be configured in several ways based on customer preferences.
Limitations	The Pressure Protection Valve assembly is designed for use on vehicle air systems with a normal duty cycle between 100 and up to 150 PSIG in a temperature range of -40°F to +200°F. The valve, as mounted on the vehicle, is unprotected from the environment and is subjected to vibration conditions similar to the vehicle.
GTD Part Number	223-XXX
Opening and Closing Performance	Refer to Pressure Protection Valve Cross Reference document.
Air Line Connection	Threaded 1/4", 3/8", and 1/2" fittings and 1/4", 3/8", and 1/2" push-to-connect fittings.
Mounting	Air tank
Material	Zamak 3
Custom Design	In addition to the 223 family of Pressure Protection Valves, GT has developed proprietary valves for tier 1 OEM's: 4145-1 designed for Meritor Wabco. 4160-1 designed for Q3.

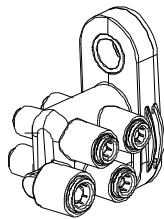
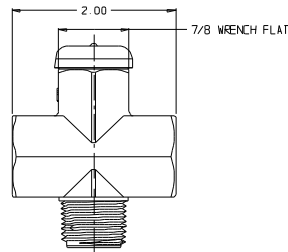
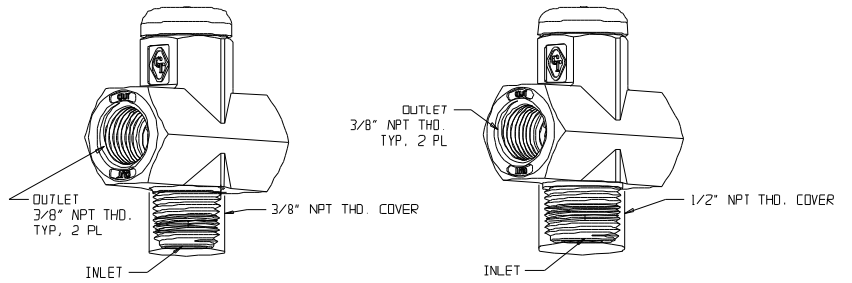
Pressure Protection Valve



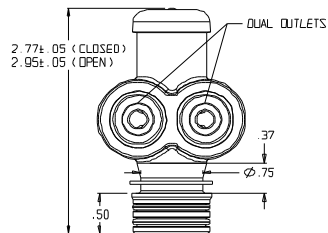
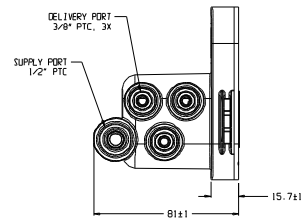
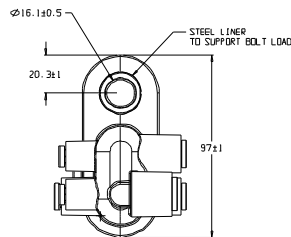
Drawings



223-XXX



4145-1



4160-1

